

Zehnder Purge Ventilation

always the best climate

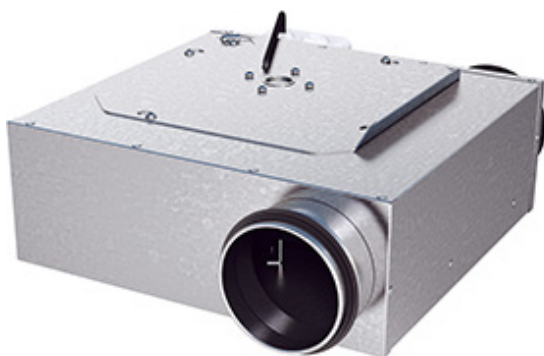
General

There may be times when you don't want to open your windows but you still want to let some fresh air in or take stale air out. With this in mind your home has been fitted with a fan for Purge Ventilation.

- **Clearing Pollutants:** Aid in reducing high concentrations of pollutants, air toxins, and water vapor emitted during activities like painting and decorating.
- **Smoke and Water Issues:** Also help eliminate smoke from burnt foods and manage excess water and moisture.

LPID100

The Zehnder LPID100 is a low profile induct 100mm fan. It is ideal for residential applications where the habitable rooms are at risk of overheating, or require purge ventilation due to sealed windows on noise sensitive sites or within a AQMA (Air Quality Management Area).



GS2 Switch

The GS2 switch is a controller for use with the LPID100



To turn on:

- Locate the switch on your wall or control panel.
- Press the switch to the up position.
- The ventilation system will start operating at the selected flow rate.

To turn off:

- Find the switch.
- Press the switch to the down position.
- The ventilation system will stop running.

Remember that purge ventilation is designed for specific scenarios, and it's not meant for continuous operation.

Zehnder Group UK Ltd
Concept House, Watchmoor Point, Camberley, Surrey
GU15 3AD
Registered in England: 2296696
T: +44(0) 1276 605800
zehnder.co.uk